



PHOTOS FULLSTOP PHOTOGRAPHY



RADIANT SEASIDE PALETTE

# Embracing a Diverse Coastal Lifestyle in Brighton

The architects did not have to look too far when seeking inspiration for the Zinc Apartments project in Scarborough. The plot is just metres from the picturesque splendour of Brighton beach, with its undulating dunes and Indian Ocean palette of sun-blessed days and evening sunsets.

The concept of the design was therefore understandably, and appropriately, inspired by elements of the sea: "an ark-like building adorned with a bubble façade feature, louvers and glazing".

Purpose-built to embrace this exceptional coastal lifestyle, the 20 one and two-bedroom apartments were designed by Meyer Shircore & Associates and constructed by 3B Build.



According to the architects, "This contemporary residential development focuses on providing high-quality apartment living for a mixture of small families, empty nesters and single/couple occupants. It also contributes to a denser and more liveable coastal neighbourhood, which enriches the existing developments."

"Emphasis was placed on creating a building that identifies itself within its environs, complies with the local scheme, design guidelines and policies, and provides living diversity to Scarborough town."

The façade materials and their specifications, as well as the solar shading, were selected and designed to suit the locality and the prevailing climatic conditions.

The construction primarily comprises precast concrete walls supported by load-bearing brickwork and concrete columns, beams and permanent formwork slabs.

*"This contemporary residential development focuses on providing high-quality apartment living which enriches the existing developments"*

A restricted palette of materials was utilised to create a restrained and high-quality finish. The materials, and the selection of textures, break up the building bulk while enhancing interest in the streetscape.

At the street elevation, glazing and transparency represent the predominant character, and also assist with indirect street surveillance. Aluminium, powder-coated louvered screens on the balconies serve as shades and privacy screens for the residents; and the bubbled and painted precast concrete panels have been incorporated as a feature wall.

The building was planned to reflect an environmentally conscious design, taking advantage of natural day light where possible, and utilising shading and screening devices to reduce direct heat and glare without compromising the views.

The materials were specifically selected with the key criteria of providing thermal comfort within the building, complemented by deep overhangs on balconies to prevent summer sun penetration. The colourback glazing, for example, is Low-E and high-performance glass.

**Highly Experienced Builders**

3B Build Pty Ltd is a well-established construction company based in Perth and comprising two partners – Sam Davidson and Stuart Sadgrove – who bring together decades of experience in the building industry.

The company offers a wide range of building and construction services, including commercial development, refurbishments and renovation, multi-level and grouped apartment developments, and design and construct capability for all levels of building construction.

In addition to standard construction and building capabilities, 3B Build is a client-focused company able to assist at all levels of a potential development: from initial feasibilities to the manipulation

**THE TEAM**




Phone: 9322 9656  
www.3bbuild.com.au

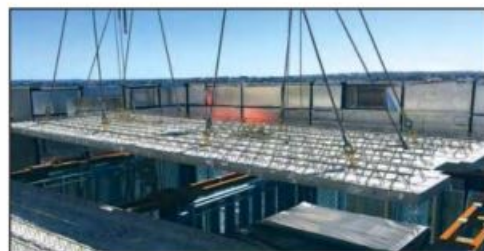
Phone: (08) 9381 8511  
www.meyershircore.com.au



**We were proud to work with 3B Build on this fantastic project at The Zinc Apartments.**

Tel: 08 9390 1999  
15B Gillam Drive  
KELMSCOTT, WA 6111  
[www.floofing.com.au](http://www.floofing.com.au)





factory made precast panels

## JOIN THE FORMWORK REVOLUTION

The Austral Deck permanent formwork solution provides flexibility, speed and efficiencies – combines precast concrete panels with a cast in-situ topping to create a suspended concrete slab. A flexible solution designed to be installed with the entire Austral Precast range, offering a complete precast building solution.

1300 778 668 | [australprecast.com.au](http://australprecast.com.au)

**BRICKWORKS**

**australprecast**

**AFFORDABLE BALUSTRADES**

Phone: 08 6202 3724

U13/86 Beechboro Road South,  
Bayswater WA 6053

E: [sales@affordablebalustrades.com.au](mailto:sales@affordablebalustrades.com.au)  
[www.affordablebalustrades.com.au](http://www.affordablebalustrades.com.au)

- Glass, Stainless Steel and Aluminium Balustrades
- Frameless & Semi Frameless Glass Pool Fencing
- Handrails & Stair Rails
- Custom Designed Glass & Stainless Steel Structures
- Gates, Fencing, Screens and Infill

## CHOOSE A BESSER™ WAY TO BUILD

BLOCKS PAVERS LIMESTONE

For projects large and small, Modular Masonry can bring your next project to life. From simple, affordable pavers through to stunning architectural blocks that meld stunning form with function, call Modular today on 9527 3201.

**MODULAR MASONRY**  
[modularmasonry.com.au](http://modularmasonry.com.au)



Mobile: 0429 864 553

DEMOLITION | CIVILS

Unit 6/ 23  
Buckingham Drive  
Wangara WA 6065

[www.pro-works.com.au](http://www.pro-works.com.au)

- Schools
- High rise apartments
- Retirement villages

*Ital Cabinets*  
*Pty Ltd*

COMMERCIAL CABINET MAKERS

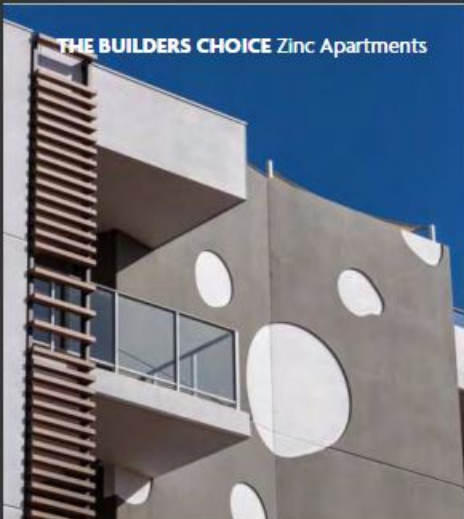
Ital Cabinets are proud to be The Preferred Joinery Contractor for 3B Build and the West Coast Highway Apartments.

- Hospitals
- Multi-unit housing
- Commercial projects



78 Christable Way, Landsdale 6065, Western Australia  
Phone: (08) 9303 9106 | Fax: (08) 9303 9131





*“Emphasis was placed on creating a building that identifies itself within its environs – The building was planned to reflect an environmentally conscious design”*

of building efficiencies and cost components, “to ensure a project can achieve a mutually acceptable outcome for both client and builder and, in turn, ensure the overall viability of the project”.

The 3B Build team’s operating criteria are highlighted by “an acute awareness of the importance of a high-end product, quality workmanship, maintaining sight of the original predetermined time and cost undertakings, and a safe workplace for all”.

**Multi-Skilled Designers**

Meyer Shircore & Associates have been a leading Perth-based design group for over 50 years, offering an outstanding range of skills and services in the design, construction and refurbishment of over 7,000 projects.

Fully aware that their clients expect flexible and innovative design and planning options, their overall philosophy is to “develop progressive, cost-effective design solutions, document to an impeccably high standard, always be on time and on budget, and be truly accountable. This is achieved by establishing long-term relations with clients through teamwork and by maintaining leadership in the application of technology to our business.”

That philosophy has resulted in the firm being honoured with multiple design and industry awards.



**DevSpec**

the supply partner to developers

**Santini**

Contributing to the profitability of developments

**P: 08 6365 4848**

2/25 Finance Place, Malaga WA 6090 E: bev@devspec.com.au

**www.devspec.com.au**

**Sunlite AUSTRALIA**  
ALUMINIUM FACADE SHADING

Sunlite congratulates 3B Build on a successful project – Zinc Apartments, 285 West Coast Highway Scarborough Beach. Featuring unique ARCHITECTURAL facade designs. Sunlite fabrication and installation of aluminium multi-level feature screens with timber finish rectangular hollow section (RHS) louvre blades. Sunlite aluminium shading systems Australian design, fabrication and installation. Contact us -  
Phone: 9351 8880  
E: sales@sunlite.com.au W: sunlite.com.au

**TOWER CRANE CO**

Congratulation on a successful project  
Call Tower Crane Co  
for all your Tower Crane requirements  
(08) 9249 2788 – john@towercraneco.com.au  
**www.cranerental.com.au**

**ADCO GROUP**  
Electrical | Mechanical | Integrated | Fire

**adcogroup.com.au**

Trusted by Perth’s best builders

ADCO Group offer Value Engineering and Design across all our service areas.

- Electrical
- Mechanical
- Integration
- Fire & Maintenance

EO 007407 | EO 012014 | EO 012013 | ARO 0042017 | F20-35415